

ISOWINDOW UVAU ES For Door's, Window's and Corner Details

DESCRIPTION

Isowindow UVAU ES with its divided backing strip, and finger lift liner system offers the ability to seal corner and window details inside and out with ease. This product offers a great alternative to EPDM Installation is quick, clean and consistent. The fleece like fabric allows the product to be painted or plastered over, therefore ensuring seamless integration of the airtight layers. Its high grade adhesive layer eliminates the need for gun applied adhesive. **Isowindow UVAU** enables compliance to the higher standards of RAL and ÖNORM B5320 around window details. Isowindow Feba soft is very malleable and easy to work into and around window ties etc,

BENEFITS/USAGE

Can be applied to unprimed surfaces that are dust free and dry, such as clean block work, sand and cement render and form work. For dusty or porous surfaces, please reference our preparation guidelines.

- Extremely high bond strength on all types of window frames & a wide variety of surfaces: plaster, OSB, wood, & vapor barriers
- Corner junctions & overlaps
- Tear-resistant
- For adhesion to masonry, use **Bubi LF Bonding Primer** or **Uni Spray Primer** if necessary
- Divided backing strip 15mm/85mm
- **Can be plastered over & painted**

PREPARATION

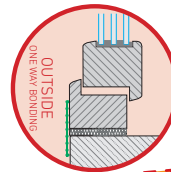
Any surface being adhered to should be properly prepared and must be free from dust and grease and substrates must be dry. For porous substrates such as XPS, EPS, concrete, masonry, etc., Please use **Bubi LF Bonding Primer** where necessary. The greater the pressure applied, the better the performance of the adhesive tape.

APPLICATION

Isowindow UVAU ES is cut to the required length and folded to an L-shape. Start by fitting the narrow strip of **Isowindow UVAU ES** to the corner/edge of the window frame/corner detail and then remove the remaining backing strip as it is being applied along the window frame. To complete the installation, remove the second backing strip as you progress around the detail and

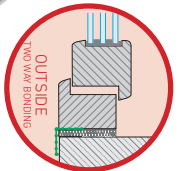
PROPERTIES

Composition	Slightly expandable PP/ PU compound laminated airtight, pure acrylate adhesive
Roll Width mm	75mm 3" / 100mm 4" 150mm 6" with divided backing strip 15/xxx
Roll Length m	25m 82ft
Rolls/Carton	6 / 4 / 2
Thickness	Approx. 0.60mm 0.0236"
Resistance to Temperature	-40°C to +80°C (Temporarily +100°C) -40°F to + 176°F
Working Temperature	From -5°C + 40°C 41°F- 104°F
Resistance to Ageing	Permanent Long Life / Non hardening
Storage	12 months - Recommended
Uv-resistance	Max. 12 months
Color	Grey with White Isowindow imprint
Driven Rain Test	EN 1027 / EN12208 P _{max} 600Pa ₁₀ (0A-9A) 9A - Achieved
Air Permeability Test	EN 1026 / EN12207 600Pa (1-4) Class 4 - Achieved
SD - Wert	0.14m (+0,02/-0,04m)



CAN BE PLASTERED & PAINTED OVER

ALTERNATIVE TO EPDM



DIVIDED BACKING STRIP FOR EASY WINDOW AND CORNER APPLICATION

NOTE

Isowindow UVAU ES functions as a seal and not as a mechanical fixing. The pure acrylate adhesive used does not contain resins or other additives that could cause the adhesive film to become brittle and therefore **this product is extremely resistant to ageing.**



Austrian Innovation At Work In
Ireland
Ireland: +353 (0) 866 018 555
+353 (0) 851 422 136
www.isocell.ie
info@isocell.ie



Austrian Innovation At Work In
North America
Canada FreePhone: 1-844-900-4288
USA +1 646 8448 494
www.airstoptape.com
info@airstoptape.com

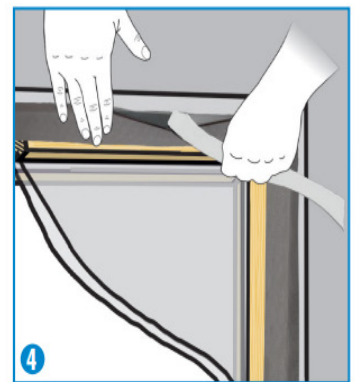
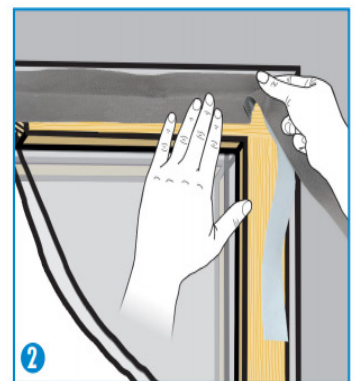


Austrian Innovation At Work In
United Kingdom
UK FreePhone: 0800 433 4833
+44 (0) 20 8123 3305
www.isocelluk.co.uk
info@isocelluk.co.uk

GUIDELINES FOR INSTALLATION OF ISOWINDOW

ISOWINDOW UVAU ES Window Tape is attached to the window frame after installation. The grey fleece side of the tape can be plastered over and painted over and must face outwards. The wide adhesive surface of the tape is attached to the wall, wood, OSB or vapour barrier. Attention must be paid that the substrate is dry and intact (if necessary treat the surfaces with BUBI LF Bonding Primer or UNI Primer).

- (1) Cut the window tape with approx. 12cm extra length. Pull the masking paper off the adhesive strip and press the adhesive tape carefully onto the window frame.
- (2) Make a fold or loop at the corners. To do so, press the window tape firmly to the window frame as far as the corner, then lift slightly, push the material along and turn 90°.
- (3) Now continue to press the window tape onto the window frame. The 'corner' fold seals the corners optimally. Do this at every corner
- (4) When the window tape is attached to the entire window frame and the joint insulated, pull off the wide masking paper and press onto the window frame. The more pressure applied, the better the adhesion



Recommended accessories

UNI - SPRAYPRIMER BUBI LF ADHESIVE PRIMER



PRESSING ROLLER 40MM, CELLULAR RUBBER

