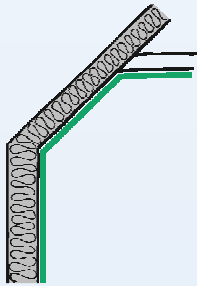


ALU-PET 1500 Vapour Barrier

A vapour barrier and airtight layer for roof, wall and ceiling constructions. When correctly installed the membrane prevents the penetration of water vapour into the construction.



ADVANTAGES:

- vapour-tight
- easy to install
- hard-wearing

PRODUCT DATA:

According to standard EN 13984

Composition:		PETP-ALU LLDPE composite membrane
Roll width:	EN 1848-2	1,5 m
Roll length:	EN 1848-2	100 m
Roll area:	EN 1848-2	150 m ²
Roll weight:		approx. 20 kg
Weight per unit area:	EN 1849-2	approx. 128 g/m ²
Tear strength	EN 12311-1	longitudinal: 230 (-80/+70) N/50 mm lateral: 260 (-90/+40) N/50 mm
Elongation at maximum	EN 12311-1	longitudinal: 71 % (-21/+49) lateral: 68 % (-18/+52)
Tear growth resistance	EN 12310-2	longitudinal: 60 N (-10/+50) lateral: 60 N (-10/+50)
Sd-value:	EN 1931	approx. 1500 m
UV-resistance:		none
Temperature resistance:		- 40 °C to + 80 °C
Storage:		cool and dry
Colour:		alu-white

APPLICATION:

Using a tacker, attach **ALU-PET 1500 Vapour Barrier** to the substrate with the aluminium side facing the installer. There should be an approx. 10 cm overlap. Bond all overlaps and connections using **AIRSTOP Adhesive Type** or **AIRSTOP FLEX Adhesive Tape**. We recommend the use of **AIRSTOP Cable and Pipe Sleeves** or **BUTYL Stretch Flex** for penetration points.

07.2013/BP/ CN

www.isocell.at Info- Tel.: +43 (0) 6216 / 4108