



ISOWINDOW FEBA SOFT WS

The tape consists of a fleece structure that can be plastered over and is coated with a high-performance adhesive. The back is completely adhesive and has split liners. The adhesive strip covering the surface can be attached directly to the window frame without detaching a liner and the tape is completely concealed when embedded.

APPLICATION

- for window installation

ADVANTAGES

- soft flexible structure
- extremely strong adhesion on all types of window
- frame and various substrates e.g. concrete, plaster, OSB, wood, vapour barriers...
- alternating adhesive coating for concealed fitting
- split liners
- flexibility for movement of building component
- can be plastered and painted over

AVAILABLE IN THE FOLLOWING DIMENSIONS

Width of roll	75 mm	100 mm
Length of roll	25 m	25 m
Liner split	25 / 50	35 / 65
Carton content/rolls	6	4

PRODUCT DATA

Material	flexible fleece, laminated air-tight
Working temperature	- 5 °C - + 40 °C
Temperature resistance	- 40 °C - + 80 °C (temporarily + 100°C)
UV stability	3 months
Storage	12 months; cool and dry
Colour	white with blue ISOWINDOW print
sd-value	7 m

INFO :
+43 6216 / 4108
WWW.ISOCELL.COM

ISOCELL

GUIDELINES FOR USE

ISOWINDOW FEBA SOFT WS

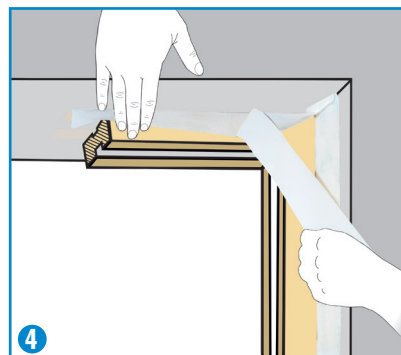
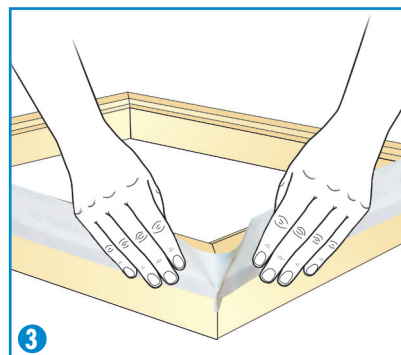
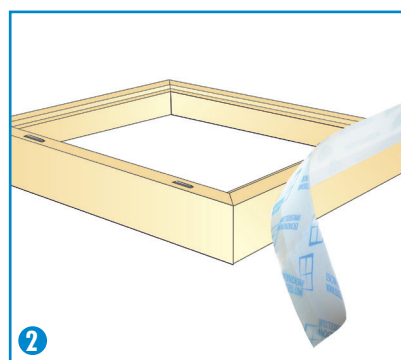
ISOWINDOW is attached to the window frame before the window is installed. The fleece side of the tape can be plastered and painted over. The adhesive side is attached to the wall, wood, OSB or vapour barrier. The substrate must be sufficiently dry and intact (if necessary treat areas with BUBI LF bonding primer or UNI Primer before attachment.)

(1)
The upper side of ISOWINDOW FEBA SOFT is covered with a narrow acrylic adhesive strip that can be attached directly to the window frame without removing a liner.

(2)
Lay the window frame with the inside facing upwards. Press the mounting strip carefully onto the window frame. Roll the ISOWINDOW FEBA SOFT along as far as the corner.

(3)
Make a fold at the corners. Do this by pressing the window tape firmly as far as the corners of the window frame, push the material along and make a fold. These 'corners' are to ensure tightness at the corners.

(4)
When the joint with the wall is insulated, pull off the covering paper and press on the window tape. The more pressure applied, the better the adhesion!



INFO :
+43 6216 / 4108
WWW.ISOCELL.COM

ISOCELL