

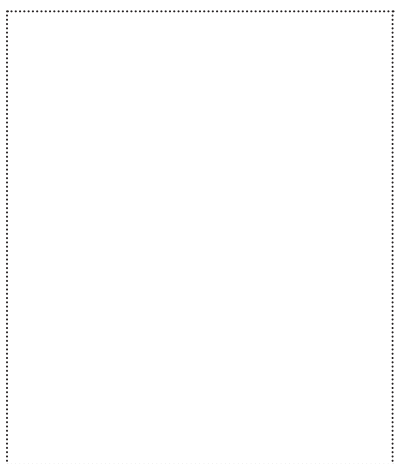


#### FIELD OF APPLICATION

- for window installation

#### ADVANTAGES

- 12 month UV-resistance
- resistance to air and wind-driven rain
- soft, flexible structure
- extremely good adhesion on all kinds of window frames and various substrates, e.g. concrete, OSB, wood, vapour barriers
- can be plastered over and painted over



## ISO WINDOW UVAU Window Tape

ISO WINDOW UVAU Window Tape provides a quick and reliable seal and vapour diffusion permeable seal for window connection joints.

The tape consists of highly UV-resistant backing that can be plastered over and painted over and is fully coated with a quality acrylic adhesive. ISO WINDOW UVAU Window Tape is ideal for window installation that is conform with RAL and ÖNORM B 5320.

#### AVAILABLE IN THE FOLLOWING SIZES

Width of roll	80 mm	100 mm
Length of roll	25 m	25 m
Liner split	20 / 60	20 / 80
Carton contents / rolls	4	4

#### PRODUKT DATA

Material	PP / PU compound
Working temperature	- 5 °C - + 40 °C
Temperature resistance	- 40 °C - + 80 °C (temporarily + 100°C)
UV resistance	12 months
Storage	12 months, cool and dry
Color	black with grey print
SD - value	0,02 m

INFO :  
+43 6216 / 4108  
WWW.ISOCELL.COM

**ISOCELL**

## GUIDELINES FOR USE

### ISOWINDOW UVAU Window Tape

ISOWINDOW UVAU Window Tape is attached to the window frame after installation. The black fleece side of the tape can be plastered over and painted over and must face outwards. The wide adhesive surface of the tape is attached to the wall, wood, OSB or vapour barrier. Attention must be paid that the substrate is dry and intact (if necessary treat the surfaces with BUBI LF Bonding Primer or UNI Primer).

#### (1)

Cut the window tape with approx. 12cm extra length. Pull the masking paper off the adhesive strip and press the adhesive tape carefully onto the window frame.

#### (2)

Make a fold or loop at the corners. To do so, press the window tape firmly to the window frame as far as the corner, then lift slightly, push the material along and turn 90°.

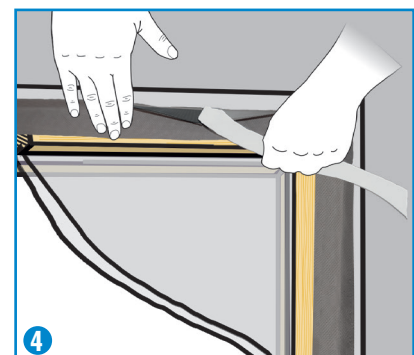
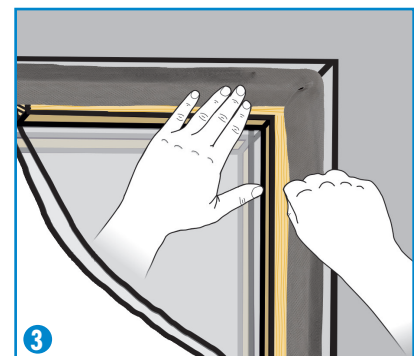
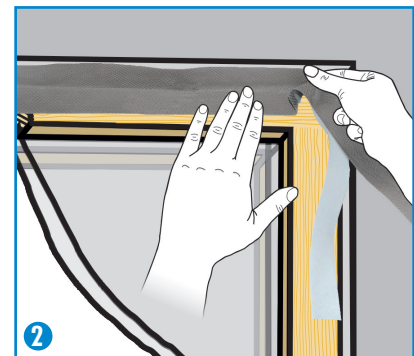
#### (3)

Now continue to press the window tape onto the window frame. The 'corner' fold seals the corners optimally. Do this at every corner

#### (4)

When the window tape is attached to the entire window frame and the joint insulated, pull off the wide masking paper and press onto the window frame.

The more pressure applied, the better the adhesion!



INFO :

+43 6216 / 4108

[WWW.ISOCELL.COM](http://WWW.ISOCELL.COM)

# ISOCELL