



OMEGA LIQUID Sealing Compound

OMEGA LIQUID Sealing Compound is a sealant for outdoor use and can be applied by brush. The water-based compound is particularly suitable for creating jointless seals in critical spots in window areas, as a second drainage level below window sills, at penetration points in the outer wall area against pressureless subsiding water; ideal for temporary seals of solid wood elements at wall openings and fascia boards. Not suitable for construction elements exposed to stagnant water (e.g. cellars). OMEGA LIQUID Sealing Compound bonds with many surfaces such as wood, concrete, aerated concrete, metal, polyester, wallboard, expanded foam panels (EPS, XPS, PUR).

FIELD OF APPLICATION

- 2nd drainage level below window sill
- material combinations
- solid wood elements
- outer wall areas
- penetrations

ADVANTAGES

- permanently elastic
- free from solvents
- impermeable to water
- seamless, jointless seal
- bonds with almost all surfaces
- can be covered with adhesive or putty
- temperature resistant to 80° C

AVAILABLE IN THE FOLLOWING DIMENSIONS

Available size	7 kg	25 kg
----------------	------	-------

PRODUCT DATA

Material	water-based polyacrylate dispersion
Consistency	paste-like
Coverage	0,5 kg/m ² on smooth surfaces
Density at 20 °C	1,45 g/cm ³
Thickness of coating	0,5 - 1,5 mm depending on surface
Working temperature	+ 5 °C - + 35 °C
μ-value	2500
Flash-off time	2 hours
UV-stability	2 months
Storage	12 months in original pack, dry and free from frost
Colour	beige

OMEGA LIQUID JOINT TAPE

Material	glass fibres with binding agent of urea resin and polymer dispersion
Roll width	50 mm
Roll length	25 m
Thickness	0,35 mm
Carton contents	8 rolls

INFO :
+43 6216 / 4108
WWW.ISOCELL.COM

ISOCELL

PROCESSING GUIDELINES

OMEGA LIQUID Sealing Compound

The surface must be frost-free, supporting, free from dust, dirt, oil, grease and release agent. Apply OMEGA LIQUID Sealing Compound with a roller or a brush in an even coating. To bridge cracks and gaps > 3 mm and where movement in the construction component is expected OMEGA LIQUID Joint Tape must be used. In this case a thin coat is applied, the Joint Tape is embedded and a further coat is applied. Cracks and gaps < 3mm can be corrected by a single thick coat applied with a brush. The particular features of OMEGA LIQUID Joint Tape are its dimensional stability and its wet strength. Protect from rain, splashing and frost for approx.. 5 hours after application. Moisture prolongs the curing time. Do not use on wet surfaces and in stagnant water. Tools can be cleaned with water after use provided the sealing compound has not completely dried.

APPLICATION - EXAMPLE 2nd DRAINAGE LEVEL BELOW WINDOW SILL

(1)

The substrate must have a smooth surface, free from dust and dirt. There should be at least 5° slope. Recesses for the window sill must be provided on the reveals.

(2)

Apply OMEGA LIQUID sealing compound using a brush. From the window frame — over the foam gap up to the end of the wall, everything must be coated. At the edges OMEGA LIQUID Sealant should also be applied up the hollowed out reveal.

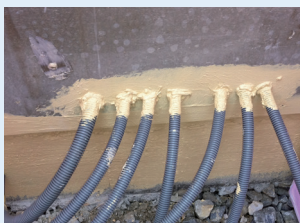
(3)

LIQUID Reinforcement Tape is placed over all corners and joints and pressed into the sealant. The foam gap must be completely covered with a strip of tape and the tape should be at least one centimetre wide on the window frame and on the wall.

(4)

A second coat is applied after the sealant has dried. Make sure that the LIQUID reinforcement tape is completely coated. When this is dry the actual window ledge can be installed. It is possible to apply flexible adhesive mortar (C2, S1) directly onto the dry sealant. The window ledge must be attached in such a way that water can also drain off in the lower water-bearing level.

APPLICATION EXAMPLES



2nd drainage level below window sill
material combinations
solid wood elements
outer wall areas
penetrations

APPLICATIONS IN PRACTICE - EXAMPLE WINDOW SILL



INFO :

+43 6216 / 4108

WWW.ISOCELL.COM

ISOCELL