

# Omega Facade Lining G20 / G20 SK DUO

## DESCRIPTION

Omega Facade Lining G20 is a vapour diffusion-open, UV-stabilised breather membrane, offering UV-Resistance when used on façades with up to a 20mm / 25/32" shadow gap between cladding. The SK DUO membrane has two integrated acrylate glue strips allowing it to be discretely sealed at overlaps, ensuring heightened protection and a clean unobstructed finish. The special coating allows the membrane to be used on facades with horizontal shadow gaps of up to 20mm / 25/32" mounted onto battens which are a minimum of 20mm in thickness. For decorative facades of up to 40% opening.

## BENEFITS/USAGE

- For wood facades
- Rain-tight, wind-tight
- UV-stabilized
- Extremely diffusive
- Easy to cut
- Anti-glare

## PREPARATION

The materials used must be free from dust and grease and the substrates must be dry and supporting. All sharp objects, such as nails, should be hammered home prior to installation. A 20mm minimum ventilation gap should be created between the membrane and the decorative facade using battens. Please pay attention to our guidelines for installation

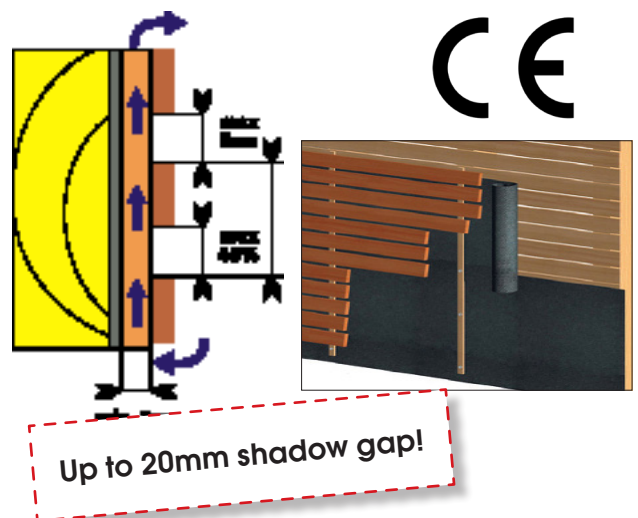
## APPLICATION

**Omega Skin Facade Lining** is attached to the substrate using a stapler/tacker **with the printed side facing outwards**. For best results membrane should be overlapped by 10cm, aligning the integrated adhesive strips which should be firmly pressed together to ensure optimal seal.

## PROPERTIES

According to standard  
EN 13859-2

Composition	PET with acrylic cover	
Roll Width	EN 1849-2	1.5m /2.5M 59" / 98"
Roll Length	EN 1849-2	50m 164FT
Roll Area	EN 1849-2	70m <sup>2</sup> 753FT <sup>2</sup>
Roll Weight	EN 1849-2	Approx. 12.39kg
Thickness	EN 1849-2	Approx. 0.25 mm
Colour		Charcoal grey
Weight per Unit Area	EN 1849-2	177 g / m
Sd-Value	EN ISO 12572	0,17 m (± 0,05) 20 US perm
Temperature Resistance	EN 13859-2	-30°C to +80°C -22°F to + 176°F
Fire Performance	EN 13501-1/ EN ISO 11925-2	B s2,d0 (ASTM E 84 Equivalent Class A/1)
Tensile Strength	EN 12311-1	Longitudinal 330 N /50mm Lateral 308 N /50mm
Elongation	EN 12311-1	Longitudinal 26% Lateral 31%
Tear Resistance	EN 12310-1	Longitudinal 109 N Lateral 111 N
Resistance to Water Permeability	EN 1928	W 2 Suitable for pitches over 25°
UV-Resistance Uncovered		12 months
Long-Term Behaviour	EN 13501-1 /EN ISO 11925-2	Permanent long-life under facades with up to 20mm 25/32" wide horizontal joints



Up to 20mm shadow gap!



Austrian Innovation At Work In  
Ireland  
Ireland: +353 (0) 866 018 555  
+353 (0) 851 422 136  
[www.isocell.ie](http://www.isocell.ie)  
[info@isocell.ie](mailto:info@isocell.ie)



Austrian Innovation At Work In  
North America  
Canada FreePhone: 1-844-900-4288  
USA +1 646 8448 494  
[www.airstoptape.com](http://www.airstoptape.com)  
[info@airstoptape.com](mailto:info@airstoptape.com)



Austrian Innovation At Work In  
United Kingdom  
UK FreePhone: 0800 433 4833  
+44 (0) 20 8123 3305  
[www.isocelluk.co.uk](http://www.isocelluk.co.uk)  
[info@isocelluk.co.uk](mailto:info@isocelluk.co.uk)

## GUIDELINES FOR INSTALLATION OF OMEGA FACADE LINININGS

### TIPS FOR PLANNING

The surface must be dry and clean, and there should be no sharp corners. The size of the wooden or metal substructure should be adjusted to match the width of OMEGA Facade Lining. Calculations should take into consideration overlaps of a minimum of 10cm. For mounting of OMEGA Facade Lining (mechanically or by adhesion) the bearing surface for attachment of the lining must be a minimum of 5cm. The adhesive functions as a seal and does not take the place of a strong bond. OMEGA Facade lining must subsequently be fixed mechanically. Battens / back ventilation must be provided between the lining and the visible wooden cladding!

### (1) ROLL MEASUREMENT

Standard rolls can be cut to length using a circular saw / band saw. The cut edges must always overlap. (2) STORAGE OMEGA Facade Lining should be stored in a horizontal position and handled with clean hands and tools. Pay attention that OMEGA Façade Lining is not folded or bent.

### (3) & (4) LAYING

Unroll OMEGA Facade Lining vertically from top to bottom (or horizontally from left to right). First position straight on one side and fix temporarily, then pull to the other three sides and guarantee that the OMEGA Facade Lining is tightly laid. Attach OMEGA Facade Lining to the supporting construction mechanically using tacker clips or similar. Secure all loose overlaps, corners and edges.

### (5) ADHESIVE TECHNIQUE

Wind-tight adhesion at connections and overlaps of lengths of OMEGA Facade Lining are achieved using UNI Adhesive Sealant, OMEGA N55 Adhesive or OMEGA Facade Tape. When using SK DUO, adhesion at overlaps is made using the acrylate adhesive strips attached. Shake the adhesive well in the container and pour into the plastic bottle provided. Apply the adhesive in the area of the facade lining overlap, spread with a paintbrush and finally press on using a dispenser or clean cloth. Caution: do not let the adhesive flash off (so-called wet-in-wet adhesion).

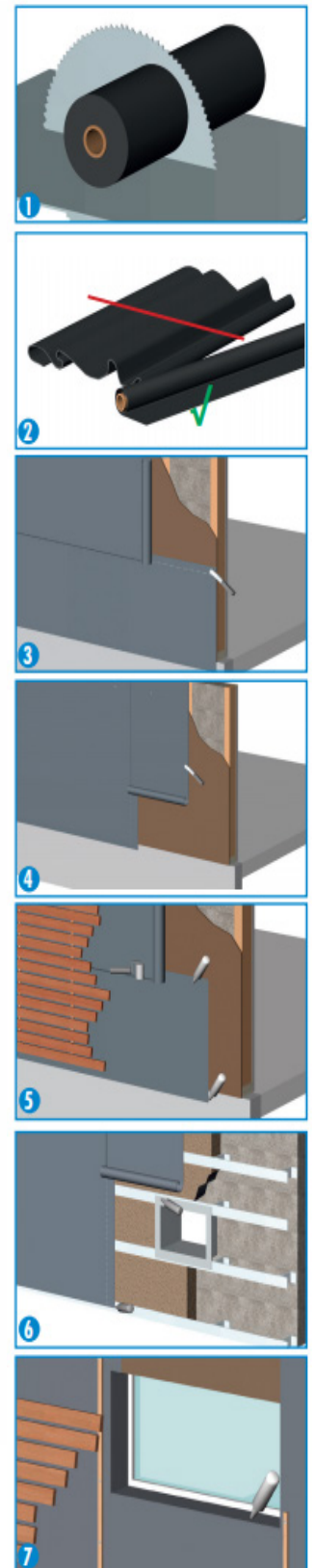
### (6) CONNECTIONS

Use UNI Adhesive Sealant for connection to masonry or metal. Materials used must be free from dust and grease and the substructure must be dry and supporting. Always pre-treat connections on very absorbent substrates with Primer. Press OMEGA Facade Lining well into the applied sealant. Connection with metal, concrete, plastic and wood can also be carried out using OMEGA N55 Adhesive. Spread the OMEGA N55 on the substrate using a paintbrush, allow to flash-off and then bond wet-in-wet with an additional layer of OMEGA N55 and press the OMEGA Façade Lining on well. (Depending on the substrate adhesion of connections with OMEGA N55 can also be carried out in one process with wet-in-wet adhesion. As a rule we recommend an adhesion test.

### (7) WINDOW CONNECTIONS

OMEGA Facade Lining can be fixed to a wooden, PVC or metal window frame using UNI Adhesive Sealant, OMEGA N55 or OMEGA Window Tape. Application as above, see 'CONNECTIONS'.

**RESTORATION.** Damaged spots can be glued wet-in-wet with a segment of Facade Lining and using OMEGA N55 Adhesive.



### Recommended accessories

#### OMEGA UVKB



#### OMEGA N55 ADHESIVE



#### UNI MS SEALANT-ADHESIVE



Austrian Innovation At Work In  
Ireland  
Ireland: +353 (0) 866 018 555  
+353 (0) 851 422 136  
[www.isocell.ie](http://www.isocell.ie)  
[info@isocell.ie](mailto:info@isocell.ie)



Austrian Innovation At Work In  
North America  
Canada FreePhone: 1-844-900-4288  
USA +1 646 8448 494  
[www.airstoptape.com](http://www.airstoptape.com)  
[info@airstoptape.com](mailto:info@airstoptape.com)



Austrian Innovation At Work In  
United Kingdom  
UK FreePhone: 0800 433 4833  
+44 (0) 20 8123 3305  
[www.isocelluk.co.uk](http://www.isocelluk.co.uk)  
[info@isocelluk.co.uk](mailto:info@isocelluk.co.uk)